



NATIONAL POWER CORPORATION

SUPPLEMENTAL / BID BULLETIN NO. 1 to the Bid Documents for the:

**DESIGN, SUPPLY, DELIVERY, INSTALLATION, TESTING & COMMISSIONING OF
SABTANG ISLAND SOLAR PV-DIESEL HYBRID SYSTEM (WITH ESS) UNDER
PR NO. HO-PIB24-002 / PB231124-CM00356(NP)**

27 MAY 2024

All prospective bidders and authorized copy holders of the Terms of Reference (TOR) of the above - mentioned project are hereby advised of the changes in the TOR, to wit:

A. SECTION IV – SCHEDULE OF REQUIREMENTS (page IV-SOR-Sab-7):

Please see attached "Annex A"


B. SECTION VI – BID DRAWINGS EW – ELECTRICAL WORKS (DWG NO. SabSPV-BDE-17.017):

Please see attached "Annex B"

All other terms and conditions shall remain the same.

For the information and guidance of all authorized copy holders of the Terms of Reference and prospective bidders.

For the Bids and Awards Committee:


ATTY. MELCHOR P. RIDULME
Senior Vice President & COO and
Chairman, Bids and Awards Committee



NATIONAL POWER CORPORATION
Gabriel Y. Itchon Building
Senator Miriam P. Defensor-Santiago Avenue (formerly BIR Road)
corner Quezon Avenue, Diliman, Quezon City 1100, Philippines
Tel. Nos. (632) 8921-3541 to 80 • Fax No. (632) 8921-2468
Website: www.napocor.gov.ph



SECTION IV - SCHEDULE OF REQUIREMENTS
BPS.2 - Breakdown of Prices
SAVIDUG, SABTANG ISLAND, BATANES

Item No.	Description of Work or Materials	QTY - UNIT	(C)	UNIT PRICE FOR GOODS AND RELATED SERVICES TO BE SUPPLIED FROM ABROAD					UNIT PRICE FOR GOODS AND RELATED SERVICES TO BE SUPPLIED FROM WITHIN THE PHILIPPINES			TOTAL PRICE		
				(D)	(E)	(F)	(G)	(H)	(I)	(J)	(K)	(L)	(M)	
(A)														
C.14	Switchyard Take-Off Structures complete with line material/hardware, braces, bolts & nuts and etc. including Fuse Disconnect Switch and Lightning Arrester Combination as described in the Technical Specifications and as shown on the Bid Drawings (for Solar PV Plant and Diesel Power Plant). a. 35 ft. Steel Pole (including excavation & backfill) b. 25 ft. Steel Pole (including excavation & backfill) c. 8" Steel Crossarm, HDG d. 12" Steel Crossarm, HDG e. 15kV, 10kA, Fuse Disconnect Switch with Lightning Arrester Combination complete with the required fuses link (15A), brackets and accessories (including installation works, testing and commissioning) f. 13kV, 10kA, Fuse Disconnect Switch with Lightning Arrester Combination complete with the required fuses link (12A), brackets and accessories (including installation works, testing and commissioning) g. 15kV, 10kA, Fuse Disconnect Switch with Lightning Arrester Combination complete with the required fuses link (8A), brackets and accessories (including installation works, testing and commissioning) h. Line material/hardware such as braces, tee-connectors, turnbuckle, insulators, terminal kit, including sealant, ground clamp, cable/conduit support etc. i. 13.8kV Underground The Line complete with the required power cable, conduit, pull boxes, basic equipment, warning tape, markers and other accessories as described in Technical Specifications, Technical Data Sheet and as shown on the Bid Drawings including installation works, clearing of right of way, cable laying, conduct of continuity test, testing and commissioning. j. Right of way (2 meters) (including clearing and grubbing) k. 15 kV, 1c-35sq mm XLPE cable, copper conductor, lead sheath, 133% insulation withstand rating complete with all the required splicing kits, termination kits, tapes, connectors, clamps, grease for cable pulling, tools and appliances, etc in accordance with the bid drawings and technical specifications. l. High density polyethylene (HDPE) pipes/conduits for power and communication cable complete with all the required appearances and accessories including excavation in any types of soil (excluding rock and excavation exceeding 1.5meters deep measured from existing ground level) dewatering, backfilling using suitable materials, disposals of surplus materials as directed by NPC, etc in accordance with the bid drawings and technical specifications. m. Concrete pullbox to accommodate the number of splices and minimum bending radius of power and communication cables complete with all the required covers, drain holes, cable supports, copper-clad steel ground rods (19mm dia x 3000mm) with clamps, etc including excavation, dewatering, backfilling, disposal of surplus materials as directed by NPC in accordance with the bid drawings and technical specifications. n. Concrete Marker Posts with reflector.	400 1 1 1 1 3 1	Ln Lot Lot Lot Lot Set Lot											
C.15														

Notes:
Final delivery site of all equipment/materials shall be at the plant site stated above.
Bidders shall enter a code representing the Country of Origin of all imported equipment, materials and accessories.
Cost of equipment, freight, insurance, etc. up to Phil. port of entry. Refer to TTB-16.1 (b).
Unit Price for Local Transportation, Insurance and other local costs incidental to delivery of the goods from the Phil port of entry to final delivery site.

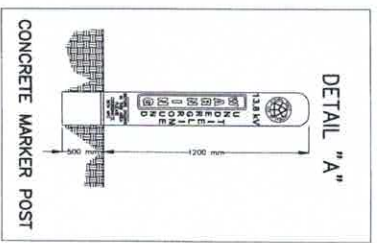
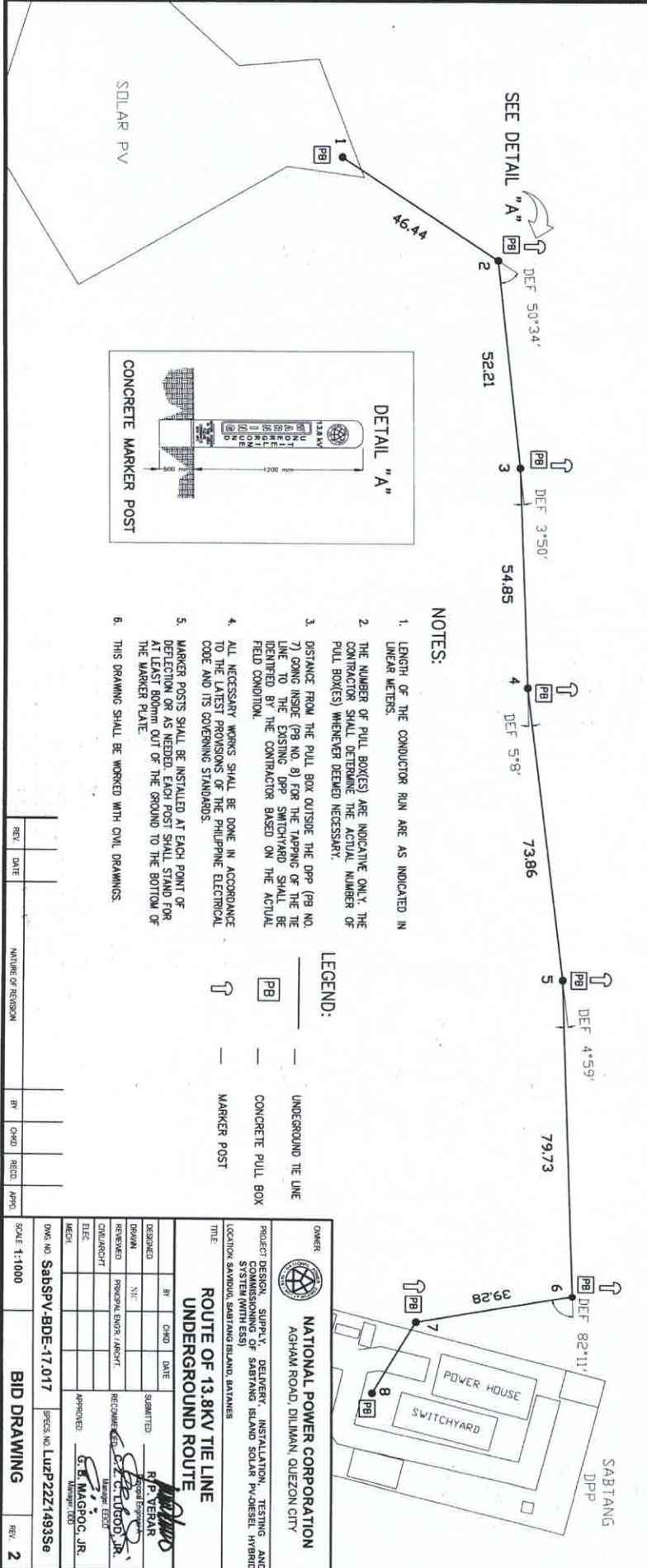
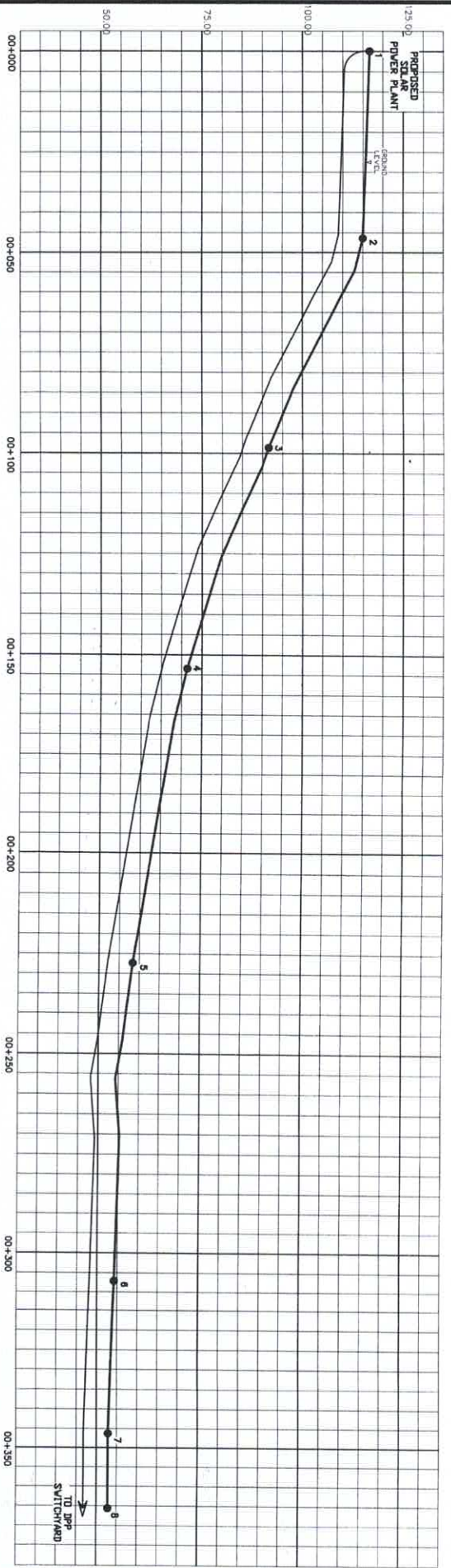
Code	Country of Origin
US	United States

Name of Bidder
NATIONAL POWER CORPORATION

Name and Signature of Authorized Representative



Designation

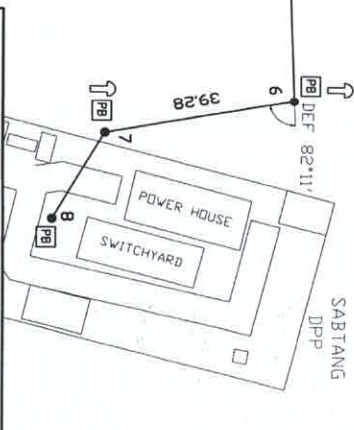


NOTES:

1. LENGTH OF THE CONDUCTOR RUN ARE AS INDICATED IN LINEAR METERS.
2. THE NUMBER OF PULL BOXES ARE INDICATIVE ONLY. THE CONTRACTOR SHALL DETERMINE THE ACTUAL NUMBER OF PULL BOXES) WHENEVER DEEMED NECESSARY.
3. DISTANCE FROM THE PULL BOX OUTSIDE THE DPP (PB NO. 7) GOING INSIDE (PB NO. 8) FOR THE TAPPING OF THE LINE TO THE EXISTING DPP SWITCHYARD SHALL BE DETERMINED BY THE CONTRACTOR BASED ON THE ACTUAL FIELD CONDITION.
4. ALL NECESSARY WORKS SHALL BE DONE IN ACCORDANCE TO THE LATEST PROVISIONS OF THE PHILIPPINE ELECTRICAL CODE AND ITS GOVERNING STANDARDS.
5. MARKER POSTS SHALL BE INSTALLED AT EACH POINT OF DEFLECTION AS NEEDED. EACH POST SHALL STAND FOR AT LEAST 300mm OUT OF THE GROUND TO THE BOTTOM OF THE MARKER FLANGE.
6. THIS DRAWING SHALL BE WORKED WITH CIVIL DRAWINGS.

LEGEND:

- UNDERGROUND TIE LINE
- CONCRETE PULL BOX
- MARKER POST



OWNER: NATIONAL POWER CORPORATION
AGHAM ROAD DILIMAN, QUEZON CITY

PROJECT DESIGN: SUPPLY, DELIVERY, INSTALLATION, TESTING AND COMMISSIONING OF SABTANG ISLAND SOLAR PV-DIESEL HYBRID SYSTEM (WITH ESS)

LOCATION: SAUVIA, SABTANG ISLAND, BATANES

TITLE: ROUTE OF 13.8KV TIE LINE UNDERGROUND ROUTE

REV.	CHNG.	DATE	SUBMITTED

DESIGNED: R.P. VERAR

DRAWN: NIT

CHECKED: R. MAGPOC, JR.

APPROVED: G.B. MAGPOC, JR.

DATE: _____

SCALE: 1:1000

DWG. NO.: SabSPV-BDE-17.017

SPECS. NO.: LuPP2271493Se

BID DRAWING

REV. 2